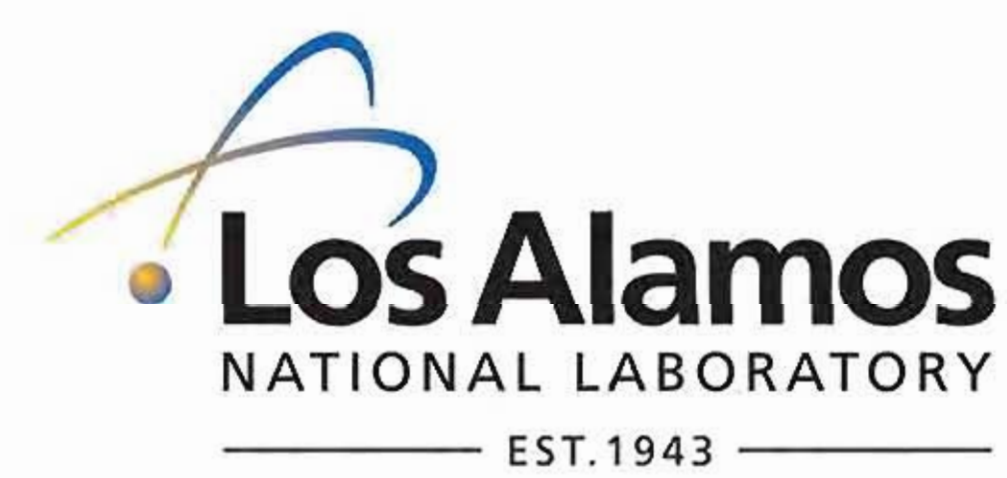


CMRR Nuclear Facility Project Overview

October 2010

Aerial Photography - September 2008

Mello Aff #1, Par 27, Ref 1, EXHIBIT 4

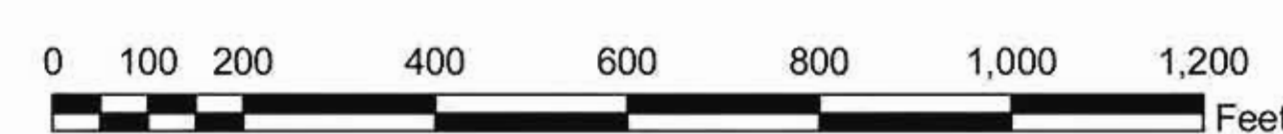


LA-UR 10-07047

- Legend**
- Proposed 2010/2011 SEIS Project Activities
 - Previously Evaluated in 2003 EIS and 2005 SA
 - Technical Area Boundary

PROJECTION: State Plane Coordinate System, New Mexico, Central Zone, U. S. Feet, DATUM NAD 83

- SPATIAL DATA REFERENCES:**
- Aerial Photography, SPPI-IP, September 2008
 - Roads, Facilities, ES-SE
 - Hillshade, 4-ft. LIDAR, GISLab
 - Potential Release Sites, ADEP-WES, EP2009-0633



1 inch = 200 feet

UNCLASSIFIED

Site Planning & Project Initiation Group
Infrastructure Planning Office
LOS ALAMOS NATIONAL LABORATORY

DISCLAIMER OF LIABILITY
Neither the United States Government nor LANS, LLC nor any of their employees, makes any warranty, express or implied, including the warranties of merchantability and fitness for a particular purpose, or assumes any legal liability or responsibility for the accuracy, completeness, or usefulness of any information, apparatus, product, or process disclosed, or represents that its use would not infringe privately owned rights.

FOR PLANNING AND GENERAL PURPOSES ONLY:
Using this map for anything other than its intended purpose may yield inaccurate or misleading results.

Geographic Information Systems
CMRR_Project_Overview_Public_V2.mxd

